



Ολυμπιακό Μουσείο
Αθήνας

Athens Olympic Museum



Athens Olympic Museum

Children's Party Guide

Under the auspices of:



International
Olympic
Committee



ΕΛΛΗΝΙΚΗ
ΟΛΥΜΠΙΑΚΗ
ΕΠΙΤΡΟΠΗ

Μέλος του:

OLYMPIC MUSEUMS
NETWORK

The Athens Olympic Museum

The Athens Olympic Museum, situated in Golden Hall, is a **contemporary museum in the capital of the Olympic Games**, which serves as the guardian of the tangible and intangible Olympic heritage, and a hub of knowledge for all generations.

It leverages **new technologies** and applies the **principles of experiential design** to enrich the visitors' educational experience.

It promotes the strong connection between **Sports, Education** and **Culture** and highlights the utilization of the legacy of the Games in Athens.

The Museum's **Permanent Exhibition** offers an original narrative approach to the history of the Olympic Games, from their birth in mythology and their glory in Ancient Olympia, to their revival and their modern versions.

Audio and tactile exhibits, award-winning interactive installations, audio narratives, short film screenings, a collection of valuable objects, personal stories of athletes and digital content seamlessly combine to guide visitors through the history of the Olympics all along the entire Permanent Exhibition.



Children's Parties at the Museum

The Athens Olympic Museum hosts and brings to life unique parties and events for its young friends, aiming to create an unforgettable celebration of joy and creativity.

Services Provided:

- Leasing of the 1896 Hall and/or the 1896 Foyer (including event equipment and coordination)
- Museum Tickets:
 - Tickets are issued for children
 - There is no charge for adults
- Personnel:
 - 1 coordinator (included in the venue rental cost)
 - 1 facilitator per 10-15 children, depending on their age (additional charge)
- Cleaning services
- Music: lounge-style background music
- Free Wi-Fi

Event Duration: 3 hours



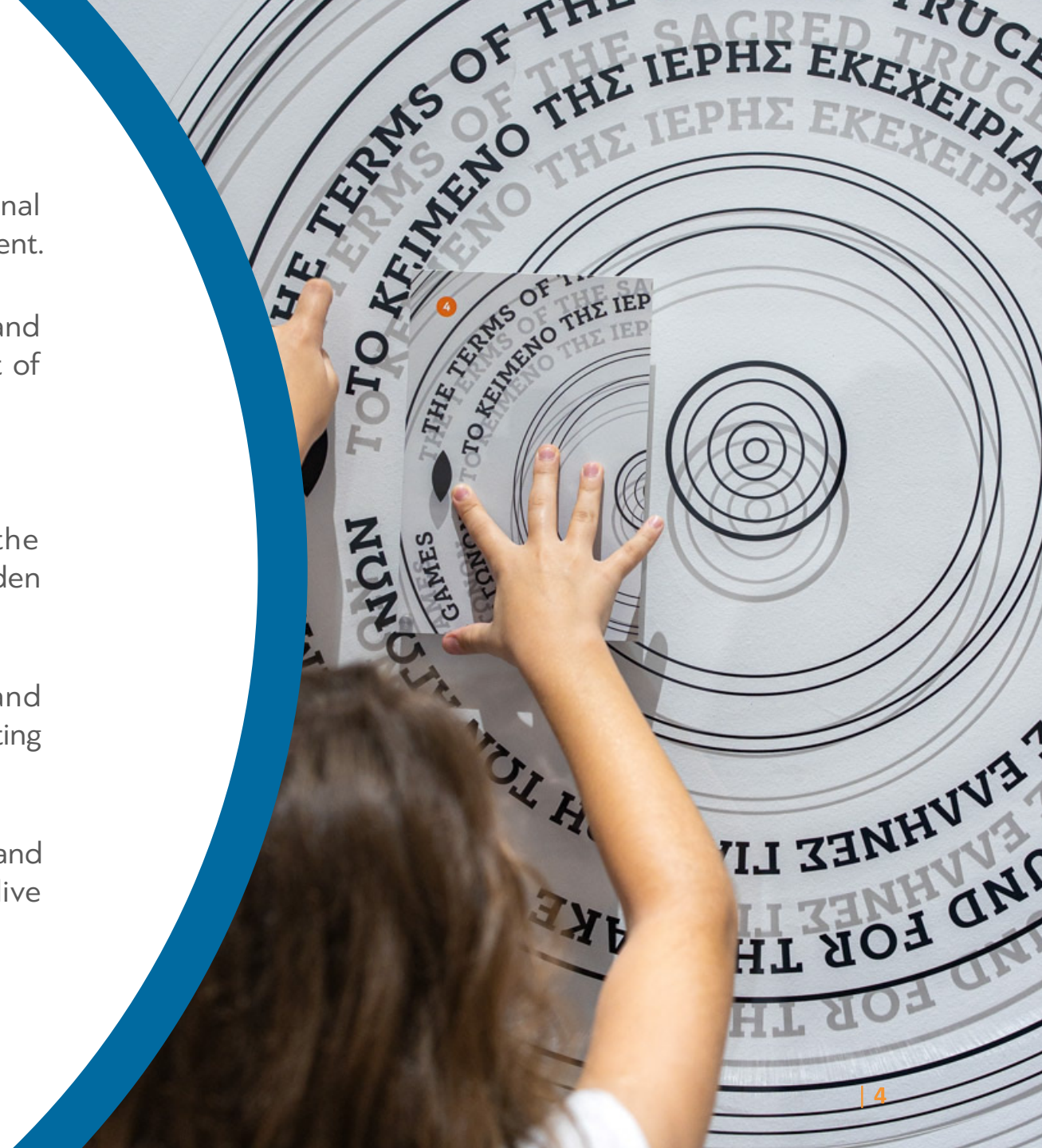
Interactive Programmes

The Athens Olympic Museum is the ideal choice for original, educational parties that offer children unforgettable moments of quality entertainment.

Through the interactive group activities, children play, discover and collaborate, all while gaining knowledge and experiences in the spirit of Olympism!

Educational Activities

- **Educational Tour:** What does Olympism mean? What makes the Olympic Games different from any other sporting event? What hidden treasures does the Athens Olympic Museum hold in its collection?
- **Treasure Hunt at the Permanent Exhibition:** Mascots, posters and memorabilia from all the Olympiads become the treasures in an exciting game about the history of the modern Olympic Games.
- **Taking Action:** Children explore the Olympic and Paralympic sports and create their own torch, their own Olympic medals, or their own olive wreath from antiquity.



The 1896 Hall

The 1896 Hall of the Museum is an excellent choice of high aesthetics to offer a unique experience that will be unforgettable for your children and guests.

Independent entrance and easy access to the parking (grey sector) of the Golden Hall Shopping Centre.

Its minimal decoration offers the possibility to customize the space according to the needs of your event.

- **Maximum number of guests:** 90 people (depending on the layout)
- **Total surface area:** 160 sq.m.
- **Catering:** Two options are provided upon request, by a reliable external partner.



The 1896 Foyer

The 1896 Foyer on the mezzanine level of the Museum is available both alongside the 1896 Hall and independently.

With natural light and an unobstructed view of the Olympic facilities, its modern and elegant design combines aesthetics with functionality.

It offers various layouts possibilities and decorative alternatives.

Access via a separate entrance from the first floor of the Golden Hall Shopping Centre or alternatively, through the main staircase or the lift inside the Museum.

Easy access for people with disabilities

- **Maximum number of guests:** 90 people
- **Total surface area:** 350 sq.m.

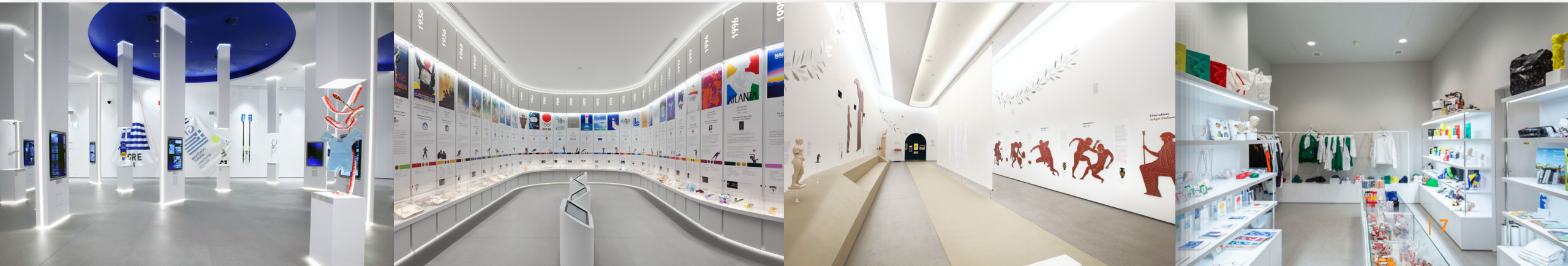


Pricelist

Tickets	Price / child
Permanent Exhibition	€7,00
Temporary Exhibition	Free

Services	Monday - Thursday	Friday - Saturday
1896 Hall	€310,00	€390,00
Facilitator per 10-15 children, depending on their age	€60,00	€60,00

You have the opportunity to purchase unique gifts for your guests from the Museum’s gift shop.



Access to the Museum

The Athens Olympic Museum is located in the western wing of the former International Broadcasting Centre (IBC) of the ATHENS 2004 facilities, currently hosting the Golden Hall Shopping Centre. It can be accessed in multiple ways:



For pedestrians

From Level 0 – Main Entrance of the Museum:

Through the pedestrian bridge that connects the Museum with the Olympic Athletic Center of Athens, "Spyros Louis".

From Level 1 – Lounge of the Museum:

Through the internal staircase of the Museum



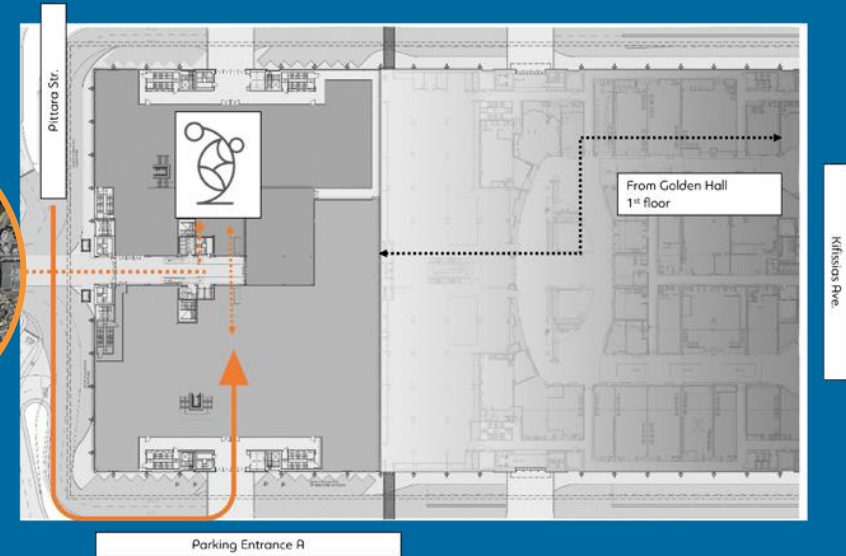
By road

The Museum is just 15-minutes away by car from both the city centre and the Northern Suburbs. You can reach it either via Kifissias Avenue or via Attiki Odos.

Parking is available inside Golden Hall for a low fee. Entrance A to the Golden Hall's parking lot leads you directly to the grey sector, from where you have direct access to the Athens Olympic Museum (Level 0) via elevators.

For the exact location of the Museum

 [CLICK HERE](#)



For more information

Access & Parking:  [CLICK HERE](#)

For reservations:

Please send a relevant request to info@athensolympicmuseum.org or call 210 6885 560.



Ολυμπιακό Μουσείο Αθήνας

Athens Olympic Museum



Contact:

+302106885560

info@athensolympicmuseum.org

