



# Venue Rentals



Ολυμπιακό Μουσείο  
Αθήνας  
Athens Olympic Museum



Under the auspices of:



International  
Olympic  
Committee



Member of

OLYMPIC MUSEUMS  
NETWORK

# The Museum and its mission

The Athens Olympic Museum is a **state-of-the-art institution** that curates the tangible and intangible Olympic heritage in Athens, serving as a hub of knowledge for all generations.

It employs **cutting-edge technology** and **principles** of **experiential design** to enhance its visitors' educational experience.

With a focus on the legacy of the Athens Olympic Games, the Museum highlights the deep connection between **Sports, Education** and **Culture**.

Through its mission, the Museum:

- **Educates** on the history and legacy of the Olympic Games, with a focus on the **principles and philosophy of Olympism**.
- Highlights the significant **role** of **Greece** in shaping the **Olympic Movement**.
- Pays **tribute** to **Greek Olympians** and the whole of the Olympic Family.
- Acts as a **source of inspiration** through athletes' narratives, stories and accomplishments.



## The Museum's Location

The Athens Olympic Museum is situated in the western section of the former International Broadcasting Center (IBC), originally built for ATHENS 2004, now housed within Golden Hall Shopping Center, on Kifissias Avenue.

It is accessible via a footbridge connected to the Athens Olympic Center “Spiros Louis” (OAKA).

**Golden Hall** Shopping Center, hosting 147 stores, a variety of fine and casual dining restaurants, exclusive delicatessens, and cafes, has been honored with the prestigious international distinction of the Best European Shopping Center Award. Additionally, it offers an underground parking facility with 1,600 parking spaces.







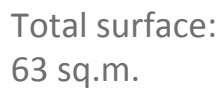


**Venue Rentals**



The contemporary design of the hall, combined with the collection of original relics, offers an unforgettable experience by “transporting” visitors back to the 1896 Olympic Games held at the Panathenaic Stadium.

- 16:9 full HD projection screen.
- Overhead projector.
- Podium.
- Flipchart.





Εδώ γίνονται οι Αγώνες...  
This is where the Games take place...





# 1896 Event Hall

The 1896 Event Hall is located on the 2nd floor of Athens Olympic Museum, with natural light and an unobstructed view of the Olympic facilities.

It is an excellent choice for social and corporate meetings, thanks to its blend of sophisticated aesthetics, unique design and cutting-edge audiovisual equipment.

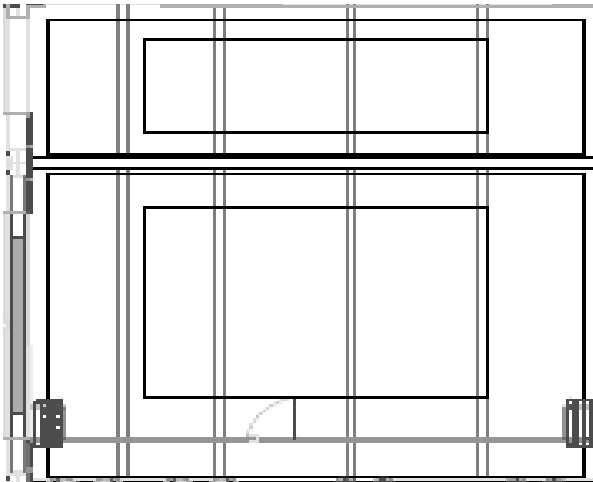
## Services:

- Technical support.
- Catering: provided upon arrangement by a reliable, external catering partner.

## Technical equipment:

- 16:9 full HD projection screen.
- Overhead projector.
- 5 panel microphones and 1 wireless microphone.
- Sound system installation.

Floorplan



Up to 140 guests  
(depending on the set-up)



Total surface:  
160 sq.m.







Ολυμπιακό Μουσείο  
Αθήνας  
Athens Olympic Museum

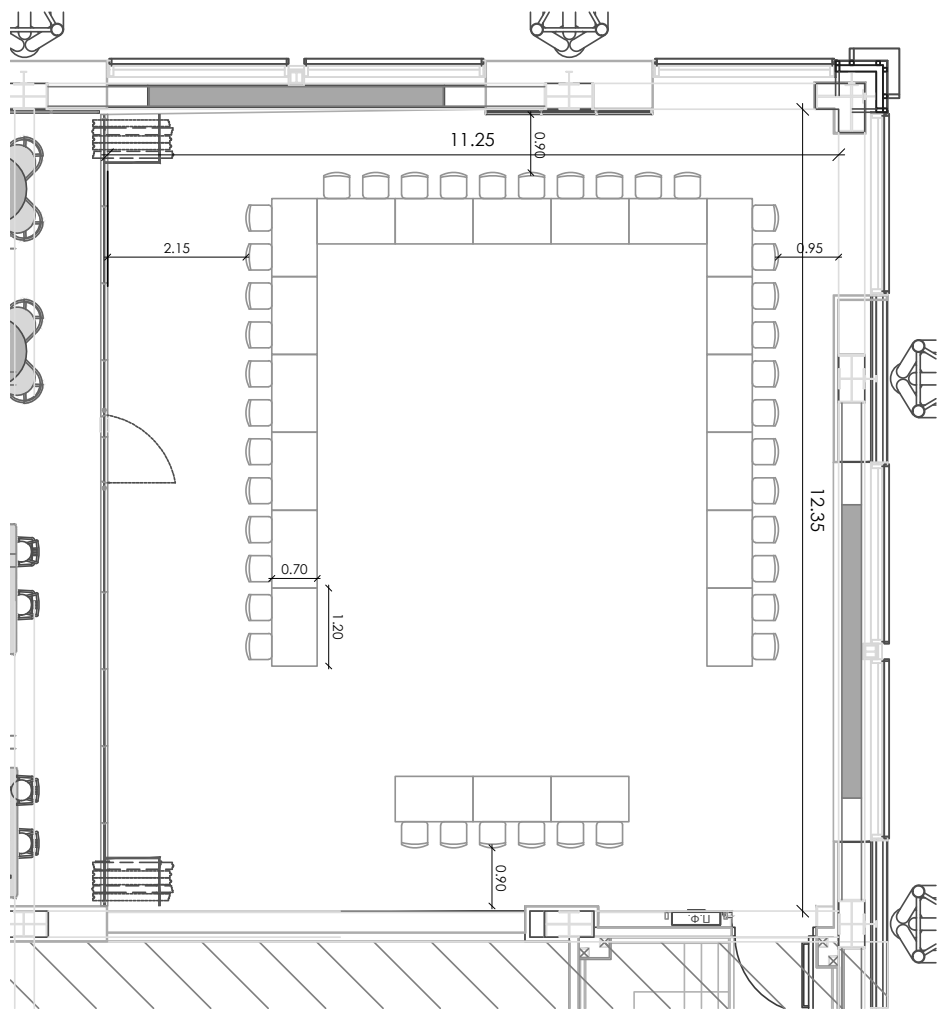






# 1896 Event Hall

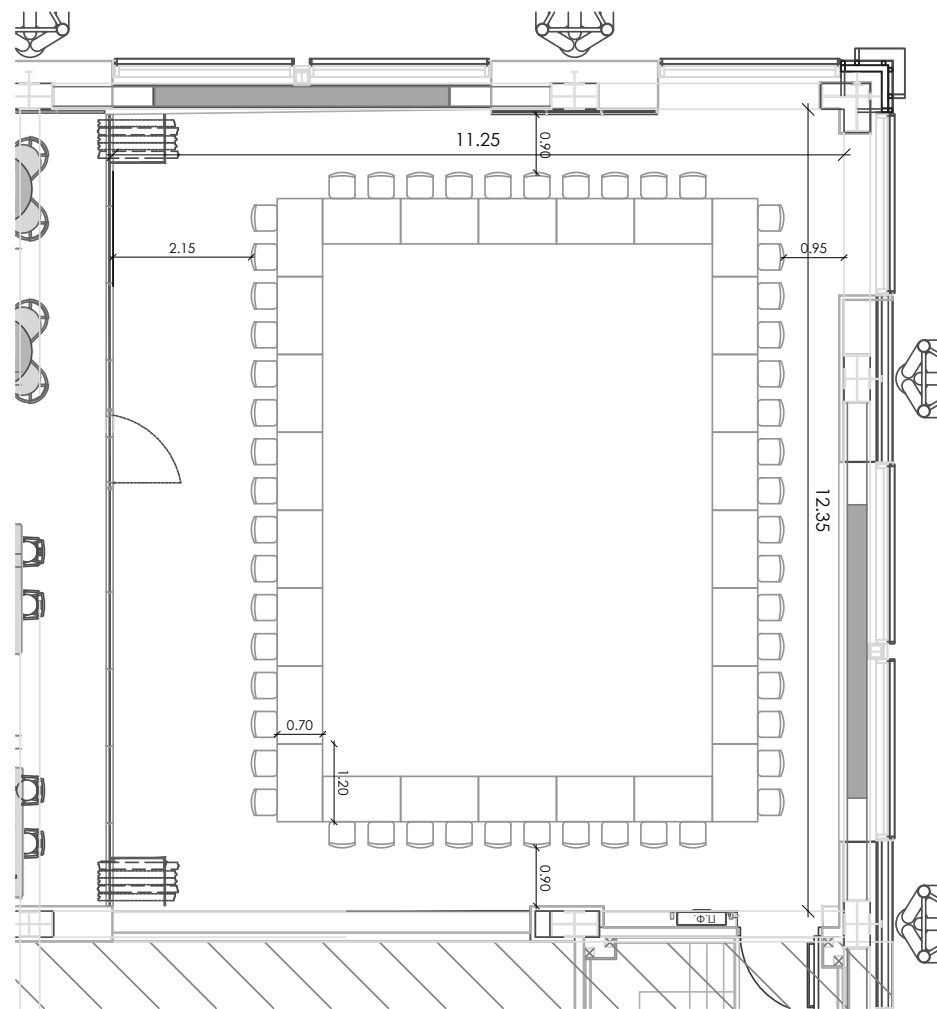
## Seating Arrangements: U-Shaped / Boardroom



**U-Shaped Style**



**40  
seats**



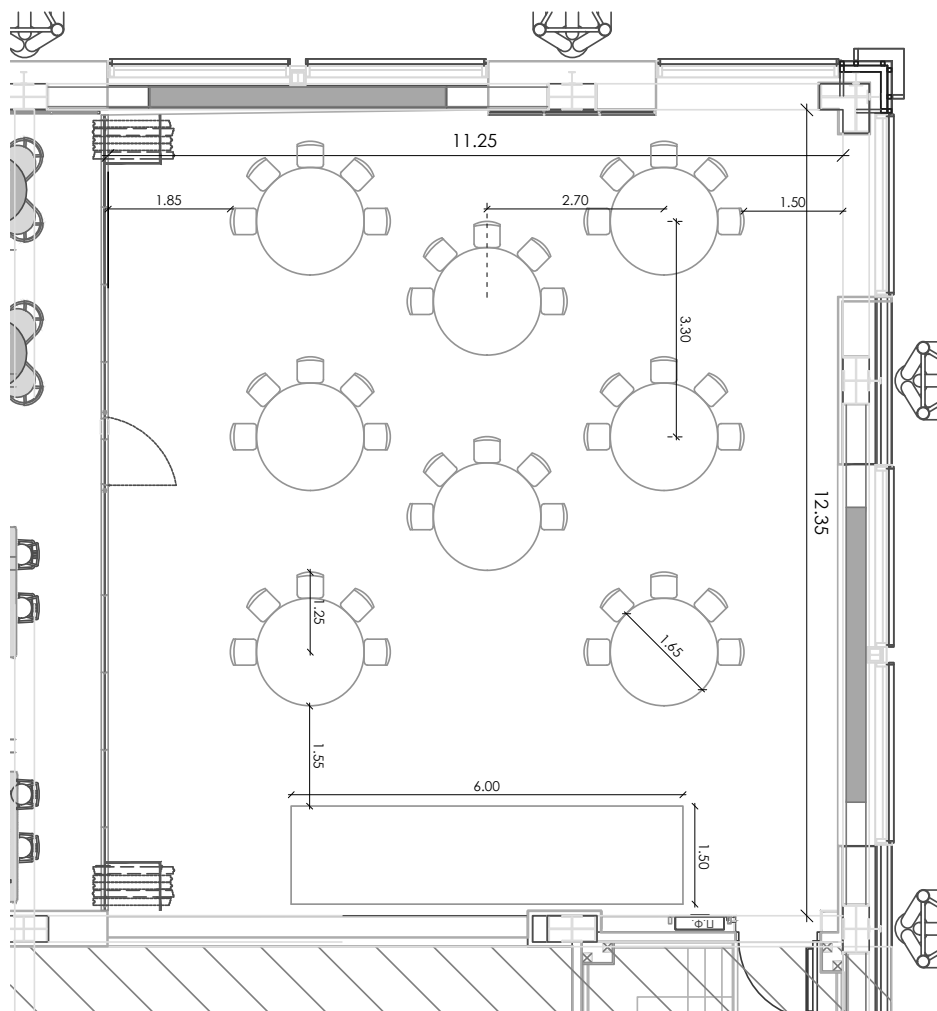
**Boardroom Style**



**52  
seats**

# 1896 Event Hall

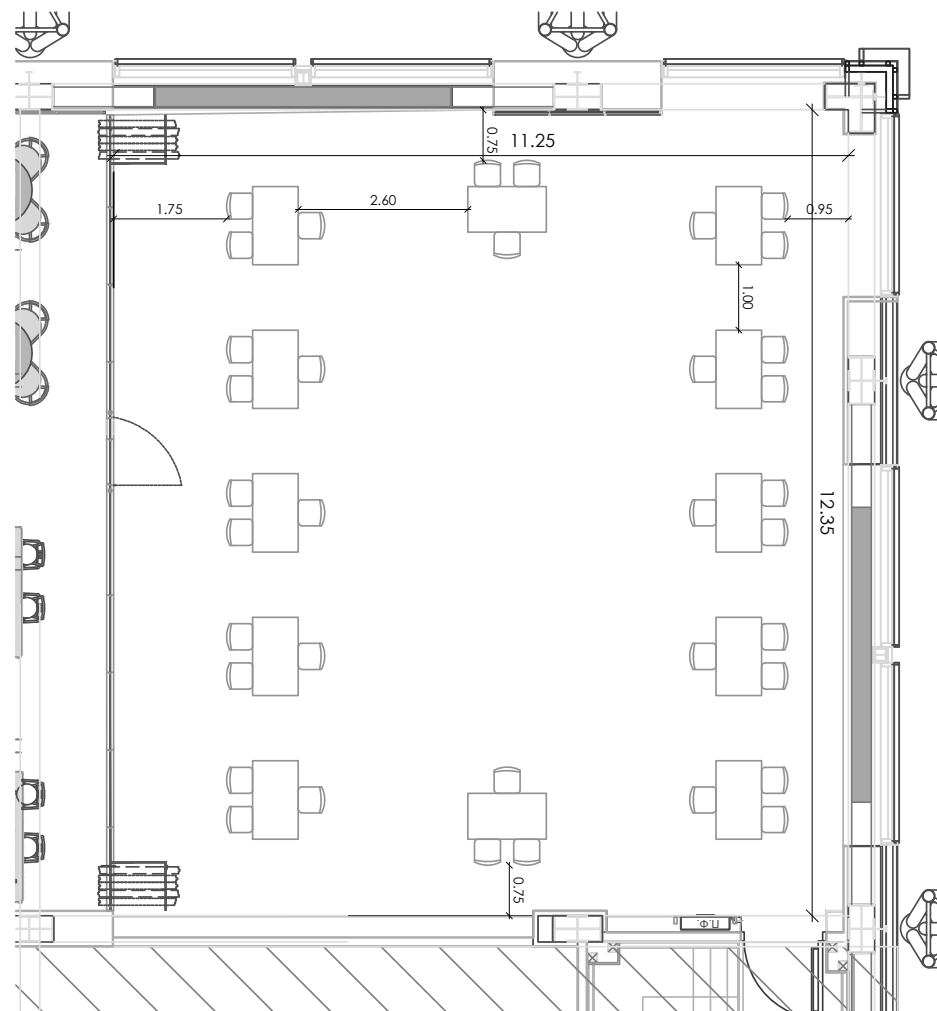
## Seating Arrangements: Cabaret / B2B



**Cabaret Style**



**40  
seats**  
(expandable to 56 seats with a stage setup)



**B2B Style**



**36  
seats**



# Foyer 1896

The Foyer 1896 is located on the 2nd floor of the Athens Olympic Museum and is an adjoining area connected to the 1896 Event Hall. Its abundance of natural light and the panoramic views to the Olympic facilities make it a distinctive venue.

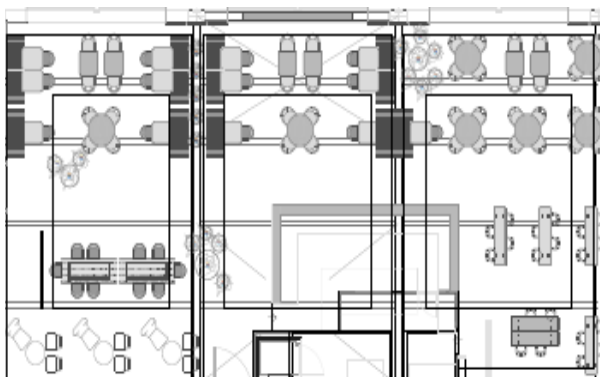
With its elegant and modern design combined with functionality, it is capable of hosting a diverse array of events.

## Services:

- Catering: provided upon arrangement by a reliable, external catering partner.

Ideally situated with a private entrance, this location offers convenient access to the parking area (grey zone) of the Golden Hall shopping center and to the Museum.

Floorplan



Up to 200 guests



Total surface:  
350 sq.m.













# 2004 Event Hall

The 2004 Event Hall is situated on Level 1, next to the Museum's main entrance and the permanent exhibition. It can be sectioned off to accommodate private functions and events.

The 2004 Event Hall is versatile and suitable for a wide array of professional and cultural events, such as corporate meetings, speeches, press conferences, book presentations, photography exhibitions and creative workshops.

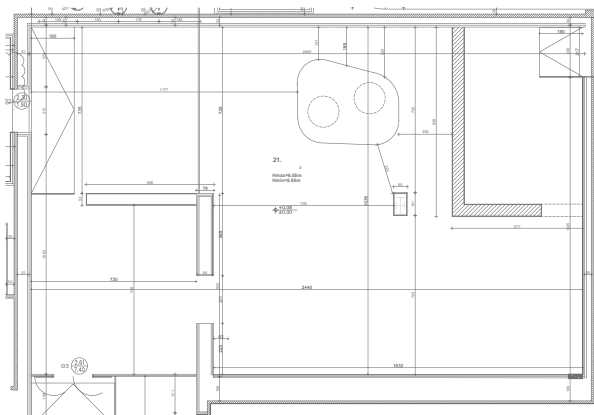
## Technical equipment:

- 16:9 full HD projection screen.
- Overhead projector.

## Services:

- Catering: provided upon arrangement by a reliable, external catering partner.

Floorplan



Up to 200 guests  
(theatre style setup)



Total surface:  
370 sq.m.





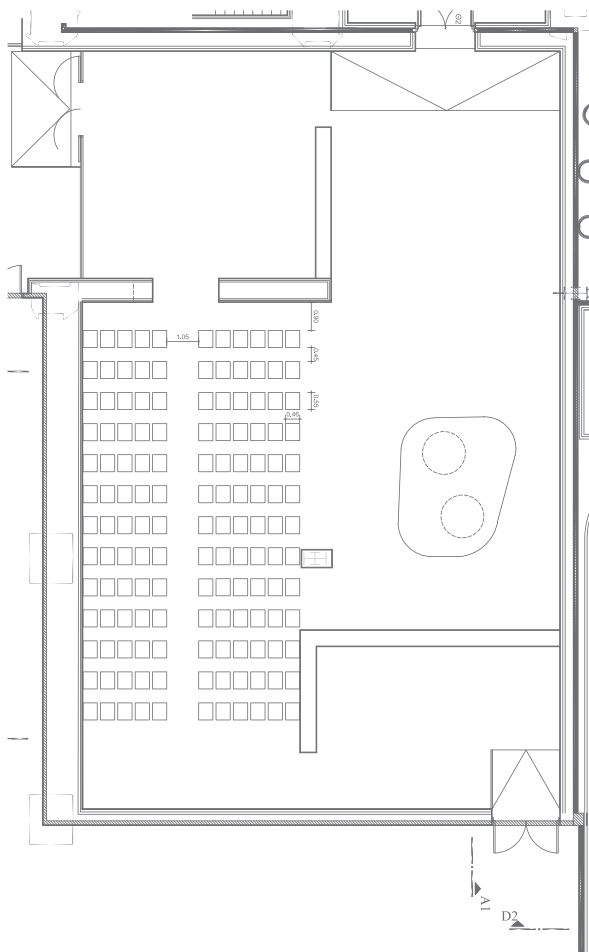


Ολυμπιακό Μουσείο  
Αθήνας  
Athens Olympic Museum



# 2004 Event Hall

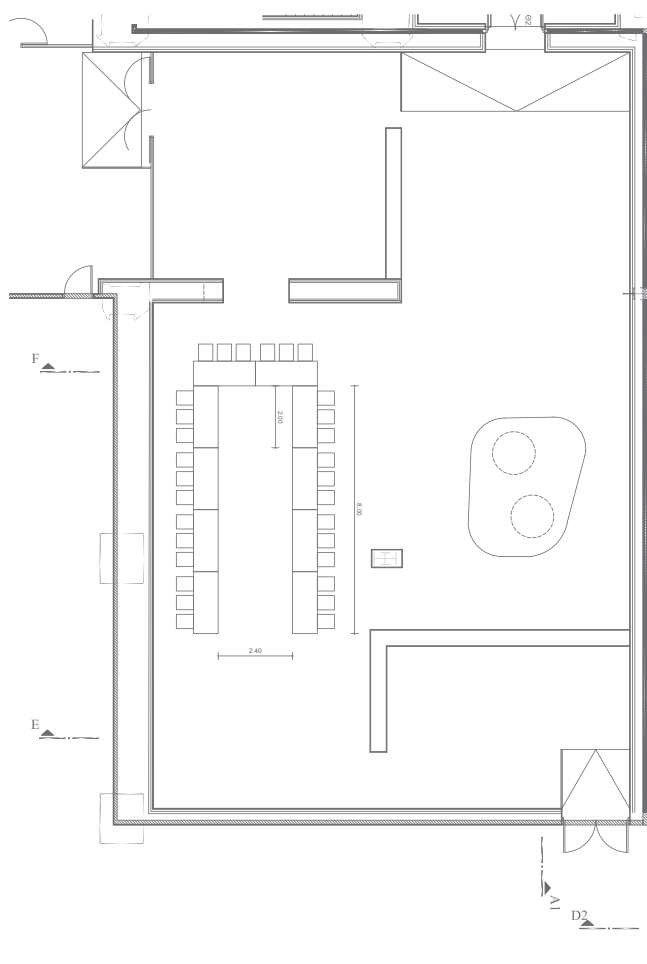
## Seating Arrangements: Theatre / U-Shaped Style / School Type



Theatre Style



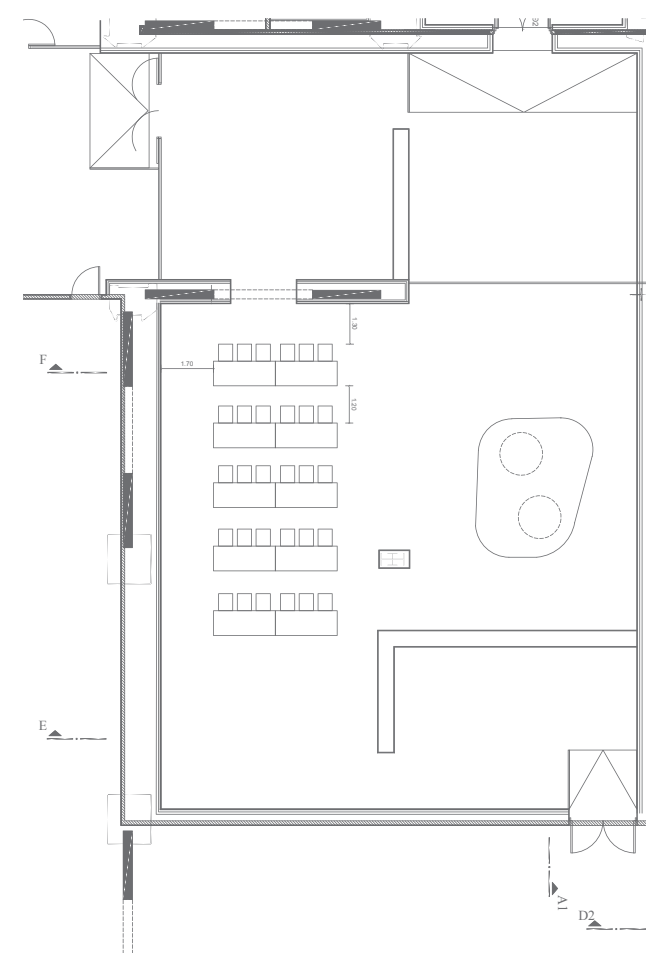
200  
seats



U-Shaped Style



50  
seats



School Type Style



50  
seats

# The Lounge

The Lounge area, situated in the mezzanine floor, can be privately reserved for events. It serves as an ideal meeting point or a place to relax.

Additionally, it can serve as a reception area for events held in the 1896 Event Hall & Foyer.

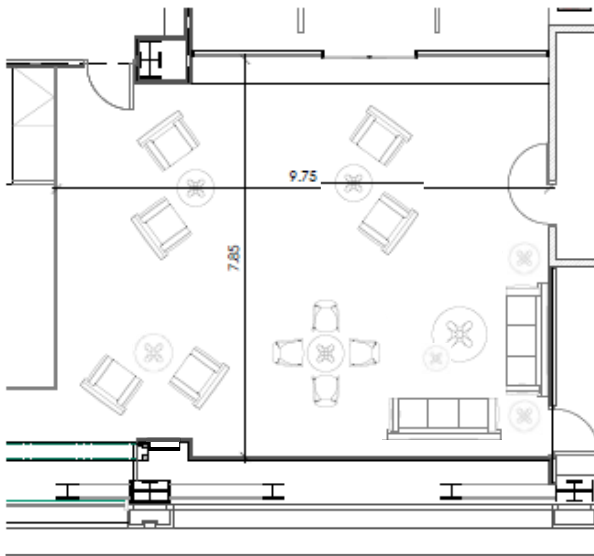
## Technica equipment:

- Projection screen & projector.

## Services:

- Catering: provided upon arrangement by a reliable, external catering partner.

Floorplan



Up to 30 guests  
(depending on the setup)



Total surface:  
75 sq.m.







## Services

The following services are available to ensure a pleasant visit at the Museum:

- The guided tour of the Museum's Permanent and Temporary Exhibitions is conducted by experienced partners, specialized in the history of the Olympic Games.
- Free lockers for storing personal items.
- Free Wi-Fi access is available throughout the Museum.
- Direct access and parking in the Shopping Center's Parking area (grey sector).





## Operating Hours (Permanent Exhibition)

### Winter Hours (01/10 - 31/05)

Monday - Friday:  
09:00 - 17:00

Saturday:  
10:00 - 18:00

Sunday: Closed

### Summer Hours (01/06 - 30/09)

Monday - Saturday:  
10:00 - 18:00

Sunday: Closed

## Access

The Athens Olympic Museum is situated in the western section of the former International Broadcasting Center (IBC), originally built for ATHENS 2004, which now houses the Golden Hall Shopping Center, on Kifissias Avenue. The Museum can be accessed in multiple ways:

### -by foot:

From Level 0 - Main Entrance of the Museum.

Via the footbridge connecting to the Athens Olympic Center “Spiros Louis” (O.A.K.A.).

### -by car:

The entry and exit of private vehicles from the parking area is carried out through the eastern ring road to O.A.K.A. (Pittara street – Parking Entrance A – grey sector).







Ολυμπιακό Μουσείο  
Αθήνας

Athens Olympic Museum



**Athens Olympic Museum**  
37A Kifissias Av., Maroussi

☎ +30 210 688 5560

✉ [venuebookings@lamdadev.com](mailto:venuebookings@lamdadev.com)

